

# Mindray Z5 Quick Guide

**3. Press to switch Probe and Exam Type**

**2. Patient – Press to open/exist animal information screen**

Help

Exit current status to the previous status

Press to enter or exit the Cine Review status

Press to show/hide on-screen arrow

Two split screen images

B mode  
**11. M mode**

Press to enter or exit the Body Mark status

Press to enter or exit the character comment status

**8. Cursor button**

Press to adjust image parameter of Scale in PW Doppler mode

Press to adjust image parameter of Baseline in PW Doppler mode

Multifunction knob

**9. Press to enter Colour mode**

Press to review the stored images

**15. Press to end an exam**

Press to open or close the diagnosis report

**14. iStation – Access stored images and clips for all patients**

F1 – Assign a function to this key through set up menu

Press to display or hide the biopsy guide line

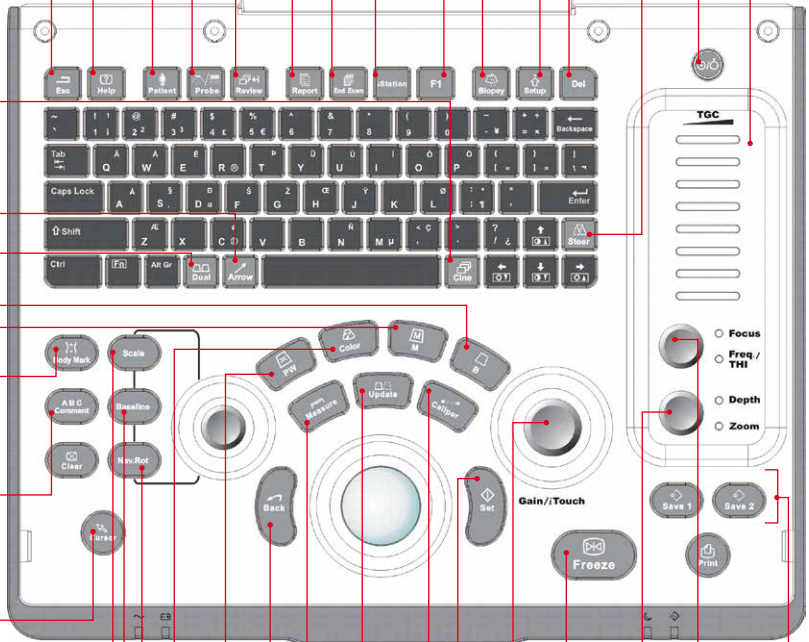
Press to open/close the set-up menu

Press to delete comments

Press to activate the steer function for linear probe

**1. On/Off button**

Time Gain Compensation increases/decreases brightness of returning signal at varying depths



**10. Press to enter PW mode**

Press to move between active images when in split screen mode

**12. Calipers for measuring distance and area**

Press for measurement packages

**6. Gain – Increases/decreases overall brightness**

Freeze image. Use trackball to scroll back through paused images to select required image

Press to confirm an operation

**5. Depth of view. Rotate to alter scanning depth. Press to zoom.**

**4. Freq/THI – Press to activate then rotate to change frequency.**

**7. Focus – Rotate to move focal point up/down the depth scale.**

**13. Save 1 stores still image, Save 2 stores a cine-loop**

# Mindray Z5 Quick Guide

---

1. Attach relevant probe before turning on the scanner. Do not remove the probe whilst the scanner is turned on.
2. Patient – Enter patient details.
3. Probe – Ensure you are in the correct application setting (preset) for the type of exam being performed.
4. Frequency – Ensure that your frequency is at the correct setting. A higher frequency setting provides higher resolution to the image, however, penetration is reduced. A lower frequency setting improves penetration ability, however, resolution is diminished.
5. Depth – Adjust so that the region of interest occupies approximately  $\frac{1}{3}$  of the screen. A depth scale (in centimetre increments) is displayed next to the image.
6. Gain – Increase or decrease the overall brightness of the image.
7. Focus – Move the focal point(s) up and down the depth scale until it/they are pointing at the region of interest. When imaging an organ that is markedly wider than can be covered by the focal zone(s) it is better to set the focal point at the deepest part of the structure, not in the middle or at the shallowest part.
8. Menu – Use the cursor to select further image optimisation parameters from the menu bar on the top left of the screen. Highlight individual parameters and use the set and back buttons (located to the left/right of the trackball) to alter each parameter.
9. Colour exam – Select a high-quality image during B mode scanning and adjust to place the area of interest in the centre of the image. Press colour to enter B + colour mode. Adjust image parameters during scanning to obtain optimised images.
10. PW exam – Select a high-quality image during B mode or B + colour mode scanning, and adjust to place of interest in the centre of the image. Press PW to adjust the sample line, press PW again and perform examination. Adjust image parameters during scanning to obtain optimised image.
11. M mode – Select a high quality image during B mode scanning and adjust to place the area of interest in the centre of the B mode image. Press M and roll the trackball to adjust the sample line. Press the M mode again to enter M mode then you can observe the tissue motion along with anatomical images of the B mode.
12. Measurements and calculations – Freeze the image and scroll back through the paused images (using the track ball) to select an appropriate image. Then press the caliper or measure button.
13. Save 1 or 2 – Save relevant images and cine-loops.
14. iStation – Access stored information for each exam performed, review images/cine-loops, transfer images to USB memory stick.
15. End exam – Finishes the exam of the current patient. You are then ready to repeat for scanning the next patient.

Note: All BCF Technology products are to be used for animal applications only.